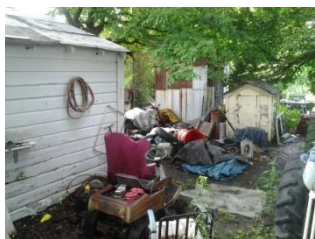


# TEN COMMON CODE VIOLATIONS

CITYOFMEMPHIS•SHELBYCOUNTY

---



## 1

### ACCUMULATION OF JUNK, TRASH, AND DEBRIS

It is a violation to accumulate junk, trash and other debris on residential property. This includes, but is not limited to discarded items, auto parts, appliances, furniture, building materials, tires, paper, cardboard, plastics, or dead limbs or branches.



## 2

### OPEN STORAGE OF MATERIAL & FURNISHING (INDOOR FURNITURE STORED OUTSIDE)

It is a violation to openly store on residential property any equipment, materials, or furnishings that are dangerous to public health, safety, or welfare. (includes couches, washers, dryers, etc.)



## 3

### PARKING & STORING INOPERATIVE (JUNK) MOTOR VEHICLES

It is a violation to park, store or leave any vehicle that is rusted, wrecked, junked, dismantled, inoperable or abandoned in a residential area, except in a fully enclosed structure or when screened from the public's view.



## 4

### EXCESSIVE WEEDS, GRASS, TREES & SHRUBBERY

It is a violation to allow grass or weeds to grow over 12 inches high, or allow plants, shrubs, trees to grow in a manner that will obstruct pedestrian traffic or visibility of motorists.



## 5

### OFF STREET PARKING (PARKING ON THE GRASS)

It is a violation to park or store any working or non-working vehicles on the lawn/grass or sidewalk of any residential property.

**REPORT VIOLATIONS TO THE  
CITY OF MEMPHIS  
311 CALL CENTER  
576-6500 OR 311**



## **6** SUBSTANDARD STRUCTURES & FENCES

It is a violation to maintain any accessory structures, including storage sheds, garages, and fences that are considered structurally unsound or in need of repair. (includes framing, walls, ceiling, floors, decking & roofs)



## **7** SPECIAL USE & RECREATIONAL VEHICLES & EQUIPMENT

No homeowner or tenant shall park or store any special use vehicle on residential property, unless the surface is made of concrete, asphalt or other approved material. It is a violation to park or store more than one recreational or special use vehicle/equipment at any single family dwelling. The vehicle may not be parked in the front yard or on the street) (includes boats, trailers, campers, & RVs)



## **8** COMMERCIAL VEHICLES & EQUIPMENT

It is a violation to park or store any commercial vehicle on any residential property or residential street. (includes 18-wheelers, dump trucks or rolled back wreckers)



## **9** ABANDONE D & DERELICT STRUCTURES

It is a violation for any property owner to refuse to properly secure any structure he or she owns or is liable for, to prevent loitering of vagrants or criminal activity. (includes vacant houses & houses where the doors and windows are broken or open to casual entry)



## **10** GENERAL SERVICE & REPAIR SHOPS

It is a violation to own or operate a commercial business in a residential area. (includes automotive, equipment, or appliance repair shops)

**ACLEANER**  
**Memphis**  
**Starts with**



It is against federal regulation to place this document in or on a mailbox.